

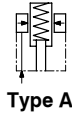
HSP 高壓支撐缸



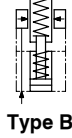
High Pressure Supporting Cylinder

• Rod: $\phi 16$ mm • Pmax: 500kg/cm²

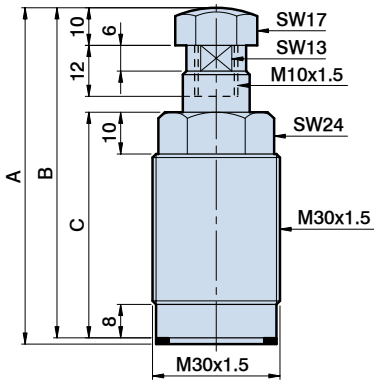
彈簧頂出型 HSP-16A
Spring ejecting type



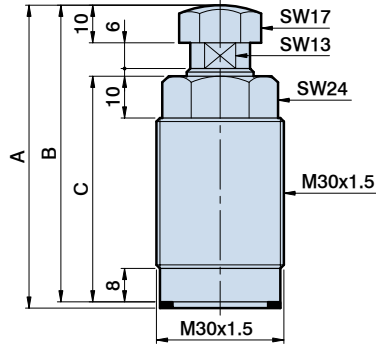
油壓頂出型 HSP-16B
Hydraulic ejecting type



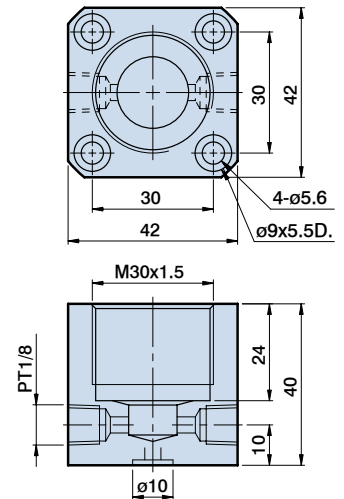
HSP-16A



HSP-16B



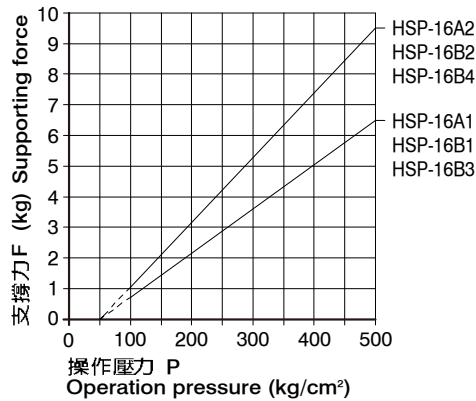
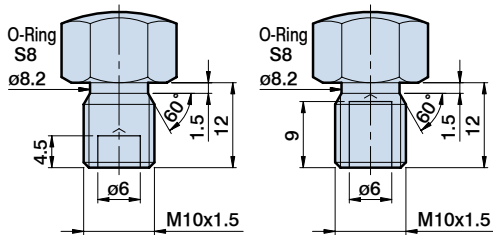
HSP-16Base



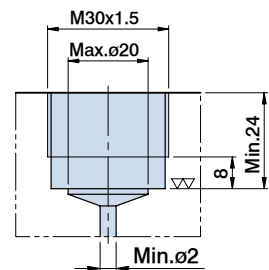
頂桿螺帽尺寸與適用型號 Rod nut sizes and applicable models

出力表 Output table

HSP-16A1 HSP-16B1 HSP-16B3
HSP-16A2 HSP-16B2 HSP-16B4



安裝底座示意圖 Mounting base diagram



Dimensional table

ITEM	MODEL	HSP-16A1		HSP-16B1		HSP-16B3	
		HSP-16A1	HSP-16A2	HSP-16B1	HSP-16B2	HSP-16B3	HSP-16B4
頂桿直徑 Rod size	mm	φ16		φ16		φ16	
頂桿行程 Rod stroke	mm	8		8		15	
最小操作壓力 Min. pressure		100Kg/cm ²					
頂桿接觸工件力量 Rod force of touching work-piece		Min=0.8Kg Max=1.3Kg		Min=1Kg Max=2.3Kg		Min=1Kg Max=2.3Kg	
理論支撐力 Supporting force	500Kg/cm ²	650Kg	950Kg	650Kg	950Kg	650Kg	950Kg
A	mm	80.5	90.5	72.5	82.5	79.5	89.5
B	mm	79	89	71	81	78	88
C	mm	54	64	54	64	61	71