

ASC 空壓轉角缸

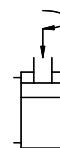


Air Swing Clamp Cylinder

• Bore:ø25-ø63mm • Pmax:10kg/cm²

產品簡介

- 本產品適用於量產零件之專用機及MC治具，提高生產效率最佳幫手。
- 主要功能為空壓缸作動時，活塞下壓行程中壓板會旋轉到設計的角度，再沿著直線繼續下壓直到壓板夾緊工件。
- 建議使用空壓轉角缸，A,B入氣口請加裝流量控制閥，避免速度過快，以及轉角行程中，請勿夾持工件，導致損壞缸體及內部零件。
- 壓板需增加長度時，請勿大於原長之1.5倍。
- 缸體材質採用鋁合金，表面硬膜處理，內壁表面光滑，使用壽命長。



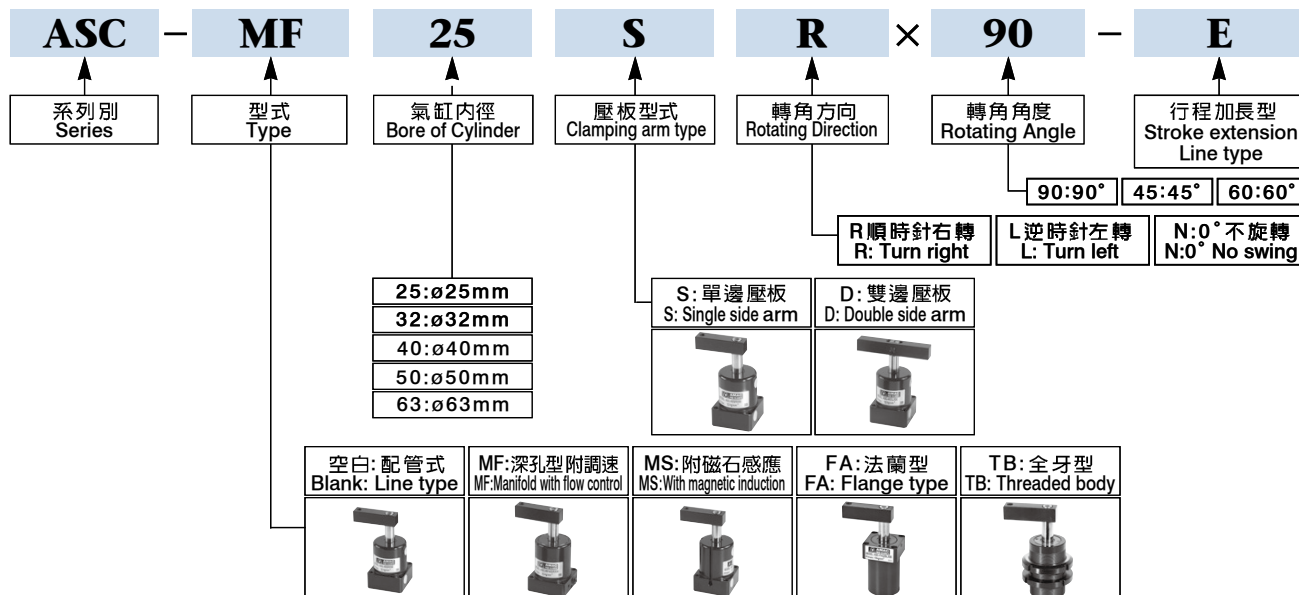
Product Introduction

- The product is ideal for mass production on a special purpose machine and jig on machining center. It will greatly upgrade production efficiency.
- When the air cylinder actuate, and the piston moves downward, the clamping arm will swing to a rated angle! Then it lowers until the workpiece is clamped securely.
- To avoid too fast motion a flow control valve is suggested to connect to the air inlet ports (A, B) on the swing clamp cylinder. Do not clamp workpiece while the clamp is swinging to avoid damaging on the cylinder barrel and internal parts.
- When increasing length of clamping arm is required, be sure do not exceed 1.5 times of the original length.
- The cylinder body is manufactured from aluminum alloy. Surface is hard membrane treated for maximum smoothness on inside surface and long service life.

特性資料 Specifications

氣缸內徑	Bore of cylinder	mm	ø25	ø32	ø40	ø50	ø63
活塞桿徑	Piston rod diameter	mm	ø14	ø16	ø16	ø20	ø20
轉角行程	Swing stroke	mm	9	11	11	13	13
垂直行程 標準/加長	Clamping stroke std/extension	mm	13	15 / 30	15 / 30	17 / 34	17 / 34
受壓面積 拉入/推出	Pressure area pull/push	cm ²	3.37 / 4.91	6.03 / 8.04	10.56 / 12.57	16.49 / 19.63	28.03 / 31.17
理論夾持力	Theoretical clamping force	6kg/cm ²	20	36	63	99	168
使用流體	Fluid	已濾清之壓縮空氣 Filtered air					
最大操作壓力	Max operation pressure	10Kg/cm ²					
操作壓力範圍	Operation pressure range	1-7Kg/cm ²					
轉角方向	Rotating direction	R: 順時針右轉 / L: 逆時針左轉 / N: 0° 不旋轉 R: Turn right / L: Turn left / N: 0° No swing					
轉角角度	Rotating angle	標準角度 90° 選擇角度 45°, 60° Standard angle 90°, Optional angle 45°, 60°					
作動方式	Acting type	複動式 Double acting					

訂購標示法 Ordering Code



ASC 空壓轉角缸

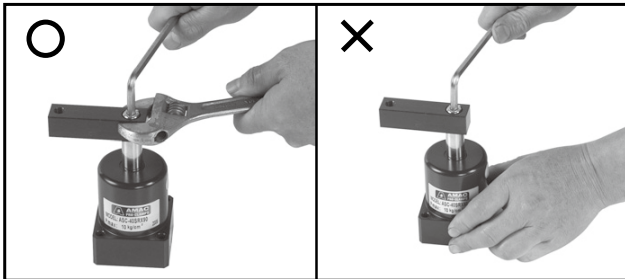


Air Swing Clamp Cylinder

• Bore: $\phi 25$ - $\phi 63$ mm • Pmax: 10kg/cm²

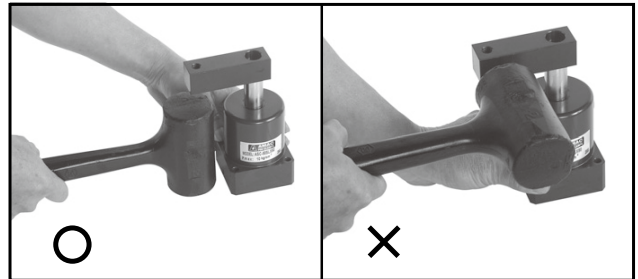
壓板鎖緊操作方式

Clamping Arm Mounting Methods



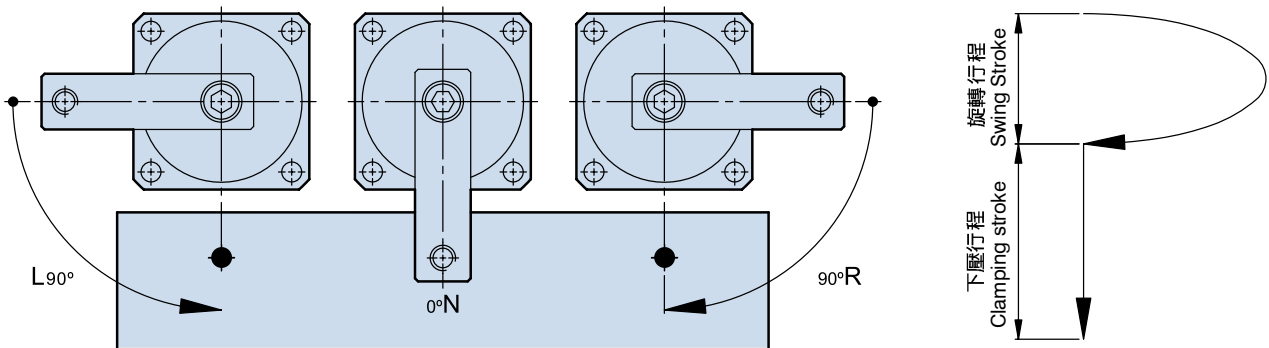
壓板拆卸操作方式

Clamping Arm Removing Methods



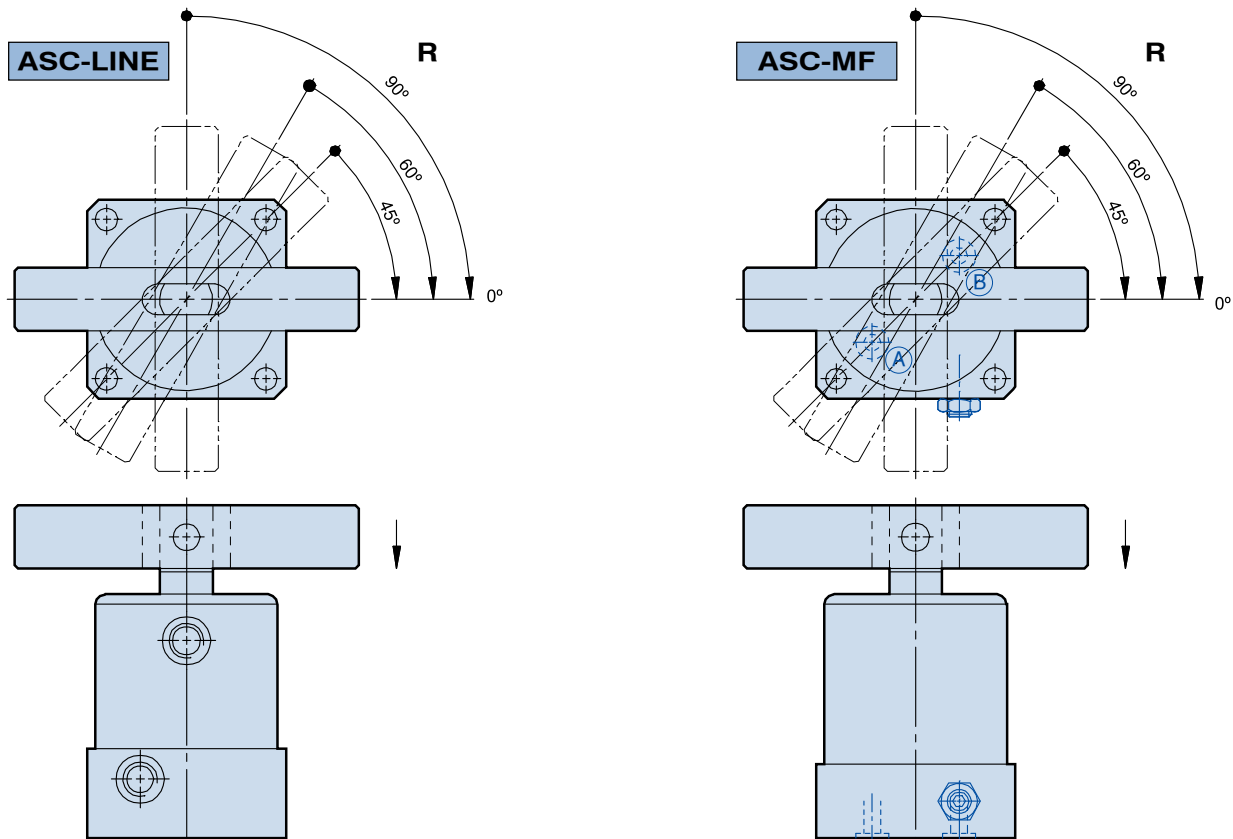
單邊壓板旋轉示意圖

Single Side Swing Clamp



雙邊壓板旋轉示意圖

Double Side Swing Clamp

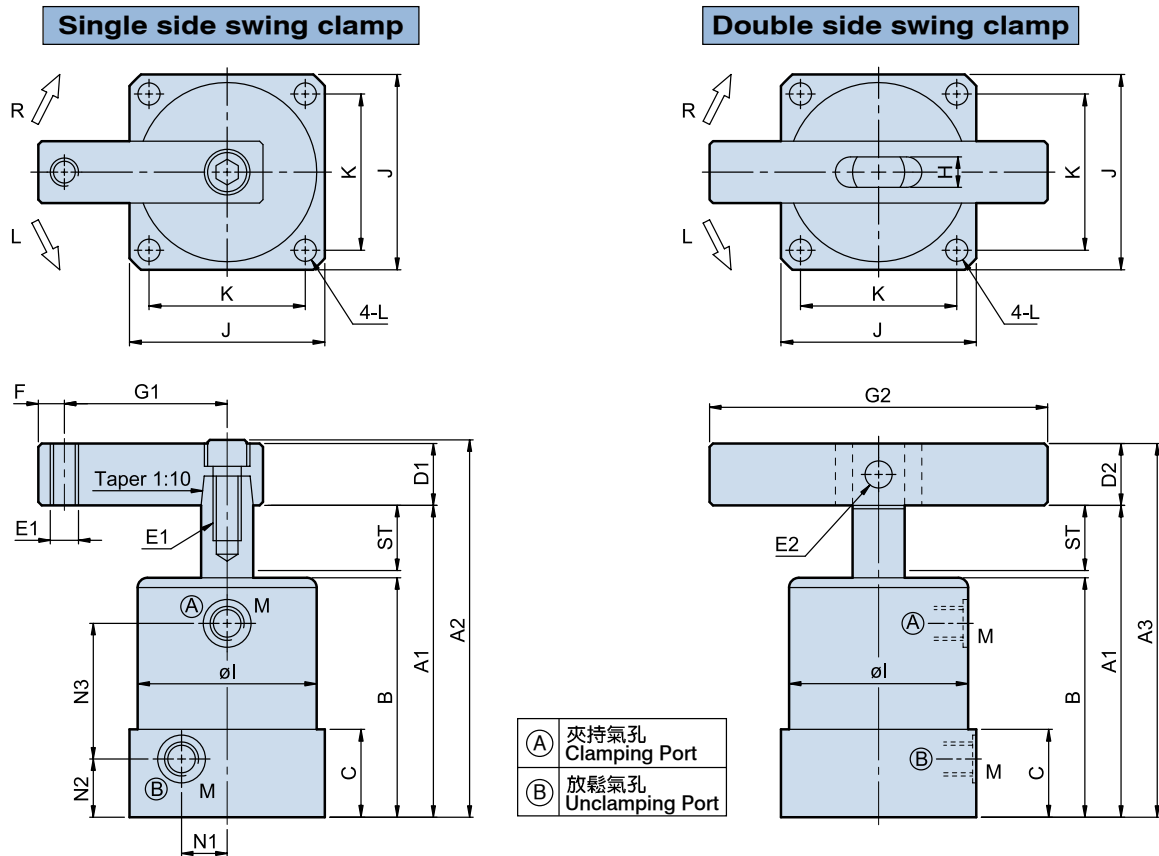


ASC 空壓轉角缸 Line type



Air Swing Clamp Cylinder

• Bore: $\phi 25$ - $\phi 63$ mm • Pmax: 10kg/cm²



Dimensional table

UNIT:mm

ITEM \ MODEL	ASC-25	ASC-32		ASC-40		ASC-50		ASC-63	
ST: Swing/Clamping	22:9/13	26:11/15	41:11/30	26:11/15	41:11/30	30:13/17	47:13/34	30:13/17	47:13/34
A1	89	108	138	108	138	124	158	124	158
A2	(105.9)	(128)	(158)	(128)	(158)	(150.4)	(184.4)	(150.4)	(184.4)
A3	104.9	127	157	127	157	146.2	180.2	146.2	180.2
B	65	78	93	78	93	90	107	90	107
C	23	28		28		31		31	
D1	$\square 15.9$	$\square 19$		$\square 19$		$\square 25.4$		$\square 25.4$	
D2	$\square 15.9$	$\square 19$		$\square 19$		$\square 22.2$		$\square 22.2$	
E1	M6 x 1.0	M8 x 1.25		M8 x 1.25		M10 x 1.5		M10 x 1.5	
E2	$\phi 6$	$\phi 8$		$\phi 8$		$\phi 8$		$\phi 8$	
F	6	8		8		10		10	
G1	35	50		55		60		70	
G2	120	140		140		160		160	
H	7	9		9		10		10	
ϕI	$\phi 35$	$\phi 46$		$\phi 55$		$\phi 65$		$\phi 78$	
J	38	50		60		70		83	
K	30	40		48		57		67	
L	$\phi 4.6$	$\phi 5.6$		$\phi 6.8$		$\phi 6.8$		$\phi 9$	
M	M5 x 0.8	G1/8		G1/8		G1/8		G1/8	
N1	8	11.5		14		17		20	
N2	16.5	19		19		21		21	
N3	39.5	45	60	45	60	54	71	54	71

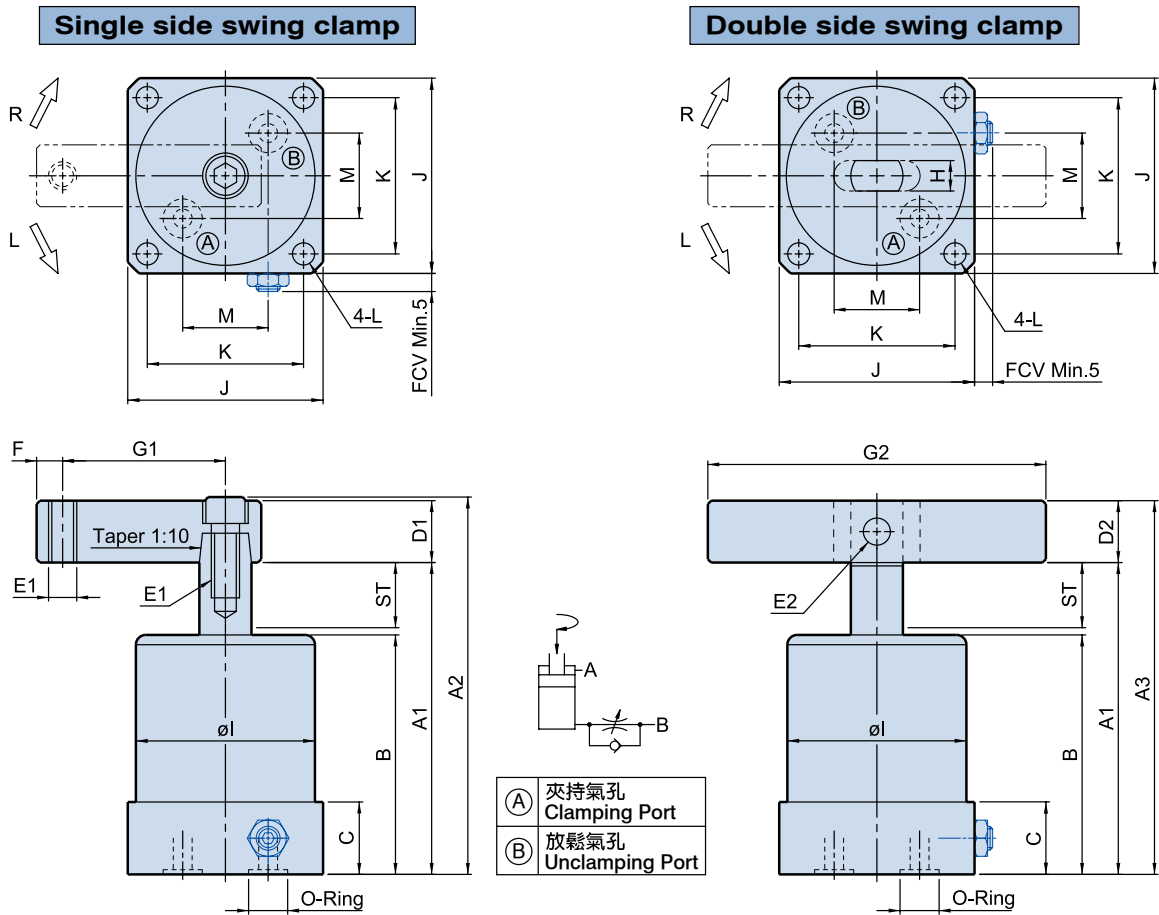
ASC 空壓轉角缸 MF 深孔型附調速

Manifold with flow control



Air Swing Clamp Cylinder MF

• Bore: $\phi 32\text{-}\phi 63\text{mm}$ • Pmax: 10kg/cm^2



Dimensional table

UNIT:mm

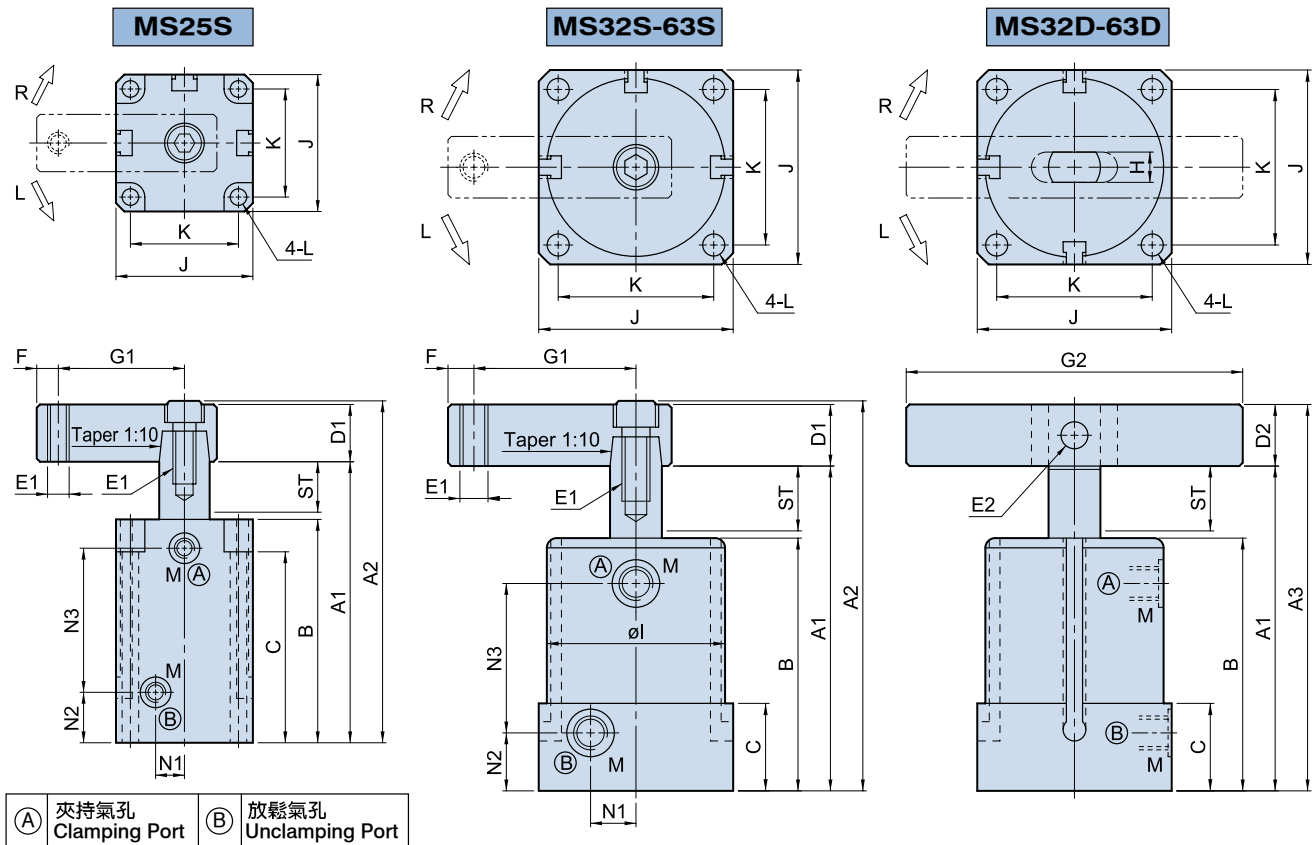
ITEM	MODEL	ASC-MF32	ASC-MF40	ASC-MF50	ASC-MF63
ST:Swing/Clamping		26:11/15	26:11/15	30:13/17	30:13/17
A1		108	108	124	124
A2		(128)	(128)	(150.4)	(150.4)
A3		127	127	146.2	146.2
B		78	78	90	90
C		22	22	25	25
D1		$\square 19$	$\square 19$	$\square 25.4$	$\square 25.4$
D2		$\square 19$	$\square 19$	$\square 22.2$	$\square 22.2$
E1		M8 x 1.25	M8 x 1.25	M10 x 1.5	M10 x 1.5
E2		$\phi 8$	$\phi 8$	$\phi 8$	$\phi 8$
F		8	8	10	10
G1		50	55	60	70
G2		140	140	160	160
H		9	9	10	10
$\phi 1$		$\phi 46$	$\phi 55$	$\phi 65$	$\phi 78$
J		50	60	70	83
K		40	48	57	67
L		$\phi 5.6$	$\phi 6.8$	$\phi 6.8$	$\phi 9$
M		19	23	28	32
O-Ring		P7	P7	P9	P9

ASC 空壓轉角缸 MS 附磁石感應 With magnetic induction



Air Swing Clamp Cylinder MS

• Bore: $\phi 25$ - $\phi 63$ mm • Pmax: 10kg/cm²



Dimensional table

UNIT:mm

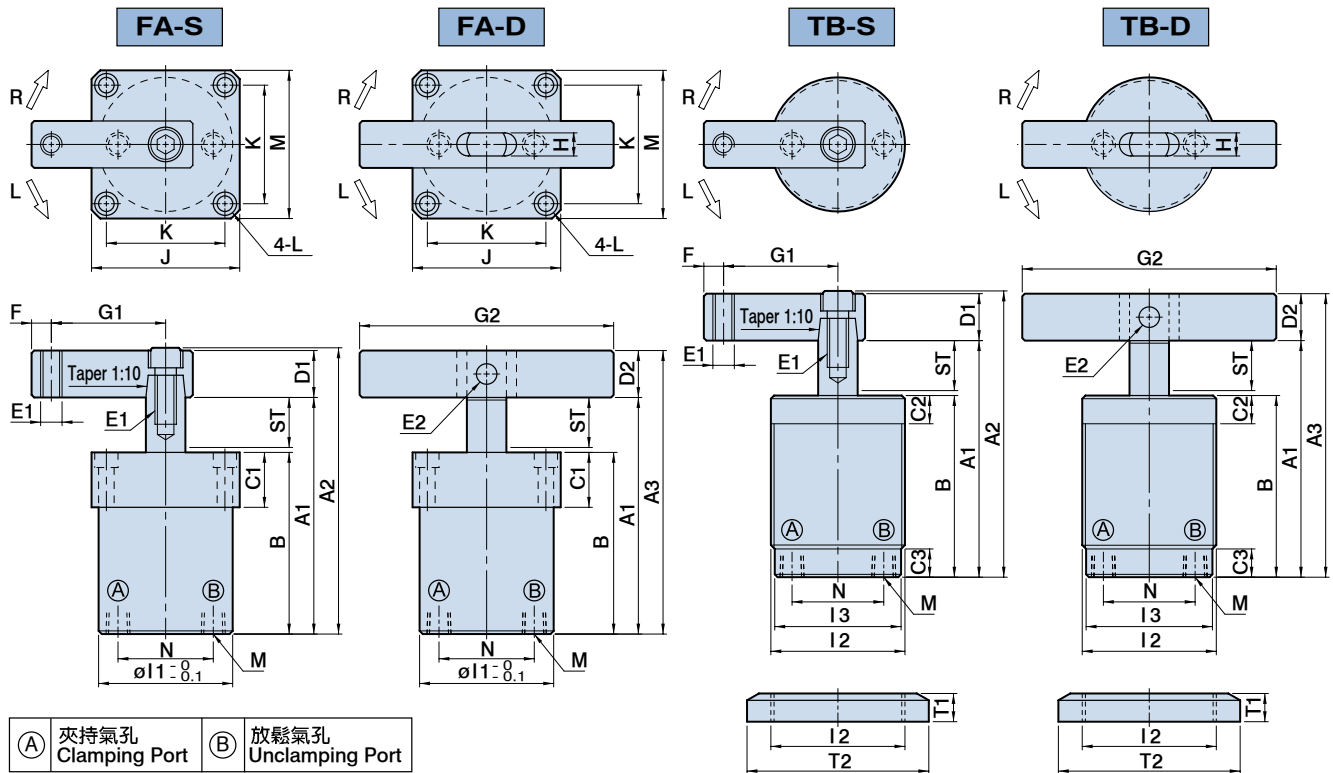
ITEM \ MODEL	ASC-MS25	ASC-MS32	ASC-MS40	ASC-MS50	ASC-MS63
ST:Swing/Clamping	22:9/13	26:11/15	26:11/15	30:13/17	30:13/17
A1	94	113	113	129	129
A2	(110.9)	(133)	(133)	(155.4)	(155.4)
A3	—	132	132	151.2	151.2
B	70	83	83	95	95
C	60	28	28	31	31
D1	□15.9	□19	□19	□25.4	□25.4
D2	—	□19	□19	□22.2	□22.2
E1	M6 x 1.0	M8 x 1.25	M8 x 1.25	M10 x 1.5	M10 x 1.5
E2	—	ø8	ø8	ø8	ø8
F	6	8	8	10	10
G1	35	50	55	60	70
G2	—	140	140	160	160
H	—	9	9	10	10
øI	ø35	ø46	ø55	ø65	ø78
J	38	50	60	70	83
K	30	40	48	57	67
L	ø4.6	ø5.6	ø6.8	ø6.8	ø9
M	M5 x 0.8	G1/8	G1/8	G1/8	G1/8
N1	8	11.5	14	17	20
N2	16.5	19	19	21	21
N3	44.5	50	50	59	59

ASC 空壓轉角缸 FA法蘭型/TB全牙型 Flange type / Threaded body



Air Swing Clamp Cylinder FA.TB

• Bore: $\phi 32$ - $\phi 63$ mm • Pmax: 10kg/cm²



Dimensional table

UNIT:mm

MODEL	ASC-FA32 ASC-TB32	ASC-FA40 ASC-TB40	ASC-FA50 ASC-TB50	ASC-FA63
ITEM				
ST: Swing/Clamping	26:11/15	26:11/15	30:13/17	30:13/17
A1	108	108	124	124
A2	(128)	(128)	(150.4)	(150.4)
A3	127	127	146.2	146.2
B	78	78	90	90
C1	22	22	25	25
C2 / C3	10 / 9	10 / 9	12 / 11	—
D1	□19	□19	□25.4	□25.4
D2	□19	□19	□22.2	□22.2
E1	M8x1.25	M8x1.25	M10x1.5	M10x1.5
E2	ø8	ø8	ø8	ø8
F	8	8	10	10
G1	50	55	60	70
G2	140	140	160	160
H	9	9	10	10
øI1	ø46	ø55	ø65	ø78
I2 / I3	M50x1.5 / ø48	M55x1.5 / ø53	M65x1.5 / ø63	—
J	50	60	70	83
K	40	48	57	67
L	ø5.6-ø9x5.5D.	ø6.8-ø10.5x6.5D.	ø6.8-ø10.5x6.5D.	ø9-ø14x9D.
M	PT1/8	PT1/8	PT1/8	PT1/8
N	32	40	50	63
T1x2PCS	11	11	12	—
T2	ø70	ø75	ø85	—